

LV JUICE

BUILT TO LAST

STANDARD & HEAVY DUTY TEST TAGS

STANDARD

The 'Great All Rounder', these tags are suitable for most environments, with Cross-Laminated High Density Polyethylene construction giving them superior tear resistance. They are self laminating with a seal down Security Flap to protect printed information.

HEAVY DUTY

Our heavy duty range is formulated to withstand hostile environments and is constructed from 350 Micron PVC coated with EXTRA STRONG adhesive for superior durability. They are manufactured to AS/NZS 3760 & AS/NZS 3012 and are ideal for factory environments & construction sites.

FEATURES

- Each Test Tag has a unique number to aid with record keeping
- UV Stable
- Supplied in re-sealable packets of 100 with permanent marking pen



VIEW THE RANGE



FREE CANTERBURY BILTONG BIERSTICKS

WHILE STOCKS LAST



When you spend over \$500 (+GST) on one invoice this month



www.transnet.co.nz



This Month

- ARC RATED MERINO BASE LAYERS PAGE 4
- PORTABLE APPLIANCE TESTER KITS PAGE 7
- NZ STYLE SPLIT BOLT CONNECTORS PAGE 8

AIRSTOP CABLE/DUCT ENTRY SEALS



To enable vapour retarders and other materials to fulfil their purpose as airtight layers in a building there must also be air-tight joints at cable entry points. Warm air finds its way inside building components through even the smallest of holes in the vapour retarder, where it then condenses. AIRSTOP Cable Sleeves remove the ability of air to move and cause drafts or condensation, guaranteeing that the construction is wind-tight and air-tight.

FEATURES

- Extremely flexible
- Resistant to ageing
- Integrated sealing plaster for airtight adhesion
- Rubber heat-resistant up to 160°C (short term)
- Can be applied to the inside or outside of the airtight layer
- BRANZ appraised



ISOCELL



APPLICATIONS

- Cable entry points
- Openings for conduits

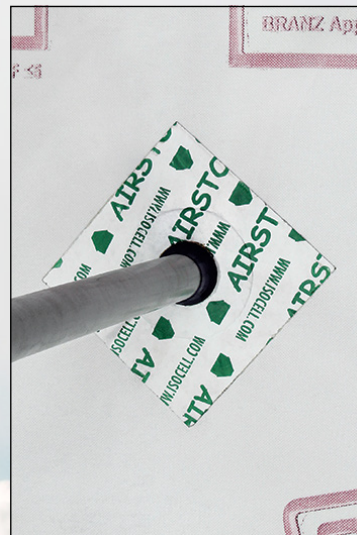


BRANZ Appraised
Appraisal No. 931 [2022]

PRODUCT SPECIFICATIONS

COMPOSITION	EPDM RUBBER, SEALING PASTER WITH AGE-RESISTANT PURE ACRYLATE ADHESIVE
TEMPERATURE RESISTANCE OF ADHESIVE	-40°C TO +100°C
OPERATING TEMPERATURE	-5°C TO +40°C
AGE RESISTANCE OF ADHESIVE	30 YEARS
CABLE ENTRY RANGE	9 SIZES COVER FROM 8-160MM O.D. SINGLE ENTRY (8-12MM DUAL ENTRY ALSO AVAILABLE)

Cat No.	Cable Entry Range Ø (mm)	Outer Dimensions (mm)
AIRSTOP812	8 - 12	150
AIRSTOP812-DUAL	2 X 8 - 12	150
AIRSTOP1522	15 - 22	150
AIRSTOP2532	25 - 32	150
AIRSTOP4255	42 - 55	228
AIRSTOP5070	50 - 70	228
AIRSTOP7590	75 - 90	228
AIRSTOP100110	100 - 110	320
AIRSTOP125135	125 - 135	350
AIRSTOP150165	150 - 165	350



TRANSNET MONTHLY GIVEAWAY SUPPORTING KIWI BUSINESSES

This month's giveaway comes from Christchurch by way of South Africa. Canterbury Biltong started from a genuine love of the snack and it shows in their attention to quality and flavour, with the use of real New Zealand beef and

classic spices. In our industry we really appreciate snacks that are packed with protein and can be taken on the road in all sorts of conditions or sit around in the glovebox for months, but having them

taste great too is definitely a plus! We hope you'll stash one of these bierstick packs within reach to keep you going when the job needs doing.

www.canterburybiltong.co.nz



Ph 0800 442 182
+64 9 274 3340

sales@transnet.co.nz

www.transnet.co.nz



LV MECHANICAL CONNECTORS FOR ROUND & SECTOR CABLE - BLOCKED

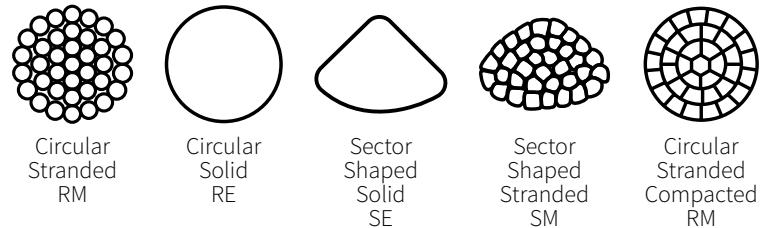


BSLB LV Mechanical Connectors are perfect for a range of conductors. These connectors are also range taking, reducing the inventory list required to cover all possible sizes.

Made from High Strength, Tin Plated Aluminium Alloy, these connectors are made to the highest international standards & offer excellent reliable connections for LV installations up to 1kV.

FEATURES & BENEFITS

- Can be used with almost every type of conductor and material
- Fully compliant to specification DIN 47640
- Bodies and shear off bolts made of high strength Aluminium alloy
- Cross-grooved conductor channels for improved long term contact performance
- Bodies, with rounded edges, completely electro-tinned
- Bolts with outer hexagonal head, waxed for better installation
- Unique design with round bores & milled notches to allow installation of sector-shaped conductors without rounding
- Blocked for barrier against moisture transfer
- Successful qualification according to IEC-61238-1 Class A
- Bimetal, Al-Al, & Cu-Cu connections



WHY CHOOSE TE CONNECTIVITY?

TE Connectivity (TE) introduced mechanical connectors to the NZ market more than 18 years ago. These products challenged the norm and dramatically changed the way the electrical industry connects & terminates cables. The results have been outstanding – shear head technology ensures the perfect connection is made every time and failures are virtually a thing of the past.

- Under TE's Utilux and Raychem brands TE are the world leaders in cable accessories and connectors – *trust the best.*
- Comprehensive selection for indoor & outdoor applications
- Products suitable for use on stranded, solid, round, sector, compacted, & non compacted cables
- Wide range taking capabilities



AUTHORIZED DISTRIBUTOR

Cat No.	Size Range (mm ²)						Contact Bolts	
	AL Solid		AL Stranded		CU Stranded		Qty	Head Size AF (mm)
	Circular	Sector	Circular	Sector	Circular	Sector		
BSLB-4/16	-	-	-	-	4-16	-	2	2.5 HEX
BSLB-10/50	10-50	10-50	10-50	10-50	10-50	10-50	2	10
BSLB-25/150	25-95	25-150	25-95	25-150	-	25-150	2	13
BSLB-95/240	95-240	95-240	95-240	95-240	70-240	95-240	4	10



Arc Rated Merino Base Layers



ATPV 4.2cal/cm² Arc Rating

These superior quality garments are designed for the workplace and offer ultimate comfort and durability. Merino wool provides natural warmth, breathability, and temperature regulation, and is blended with FR treated Viscose.

Features

- High quality 50% Merino Wool / 50% FR treated Viscose fabric sewn with FR thread
- ATPV 4.2cal/cm² Arc Rating
- Size options from s-3XL
- HRC1 labels are sewn into each garment
- Machine washable & quick drying



Compliance & Standards

AS/NZS 1906.4:2010

Hi Visibility material for Safety Garments

- Class D: Daytime use

Durability

- AS 2001.4.15:1994 - Determination of Colourfastness to Washing
- AS 2001.4.E04:2005 - Determination of Colourfastness to Perspiration
- AS 2001.4.B02-2001 - Colourfastness after UV Exposure (Dry)

ASTM F1506-18

Garments for Electrical Safety in the Workplace

- ASTM F1959/F1959M-14 Arc Rating: ATPV 4.2cal/cm²
- NFPA70E CAT1: HRC1/PPE1
- ASTM6413/6413M-15 Vertical Flame Test



BMFR821
Men's long sleeve crew

Available
now



BMFR822
Men's Long Johns



BMFR866
Men's Boxers



BMFRBEAN84
Skull Beanie



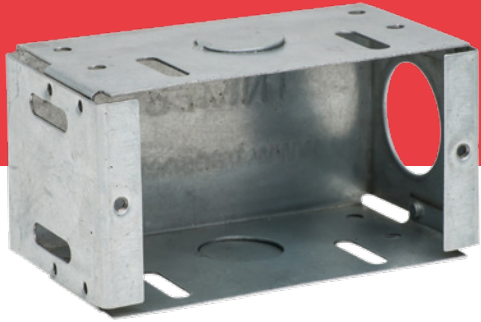
BMFRNECK85
Neck Warmer



BMFRBALA82
Balaclava



BMFR823
Men's short sleeve V



UNIVERSAL FLUSH BOX

Historically flushboxes have been designed to mount on their "long" side meaning the placement of studs and dwangs determines the placement of flushboxes. This is no longer the case.

TransNet's new "Universal Mount Flushbox" can be mounted on either the short or long side therefore increasing the placement options for power points and switches extensively.

This new flushbox is so versatile and well thoughtout that there is no need to compromise on installation or location of those vital outlets.

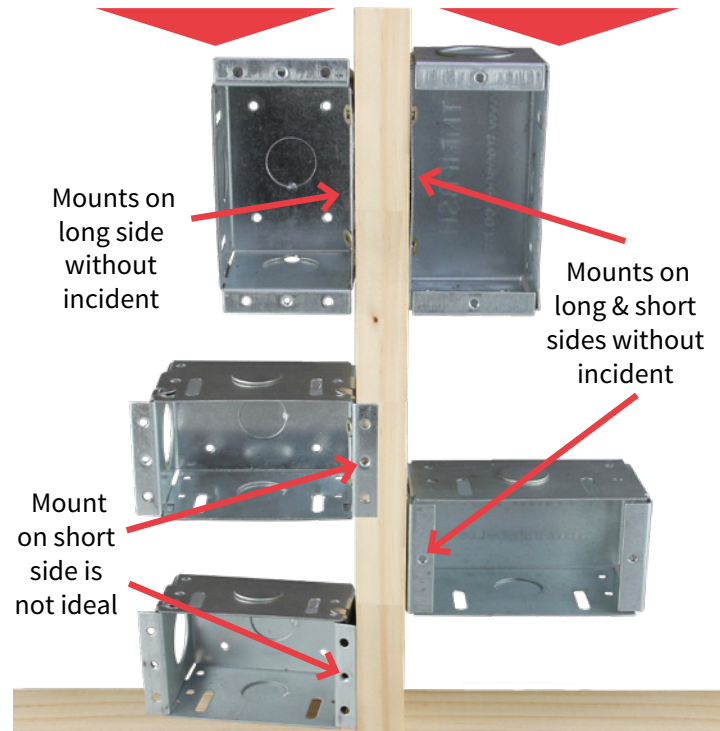
FEATURES

- Mounting holes on long and short sides
- Can be positioned vertically or horizontally on either stud or dwang without compromise
- Faceplate connection holes do not overhang stud or dwang
- One flushbox for all single power point or switch installations

CAT NO. TNMFBSH

OLD STYLE

NEW STYLE



INTUMESCENT FIREPAD

In the case of heat or fire, the fire pad develops a high volume expansion (20:1) and a high expansion pressure which causes the complete closure of an opening within a short time in order to prevent the transition of smoke and fire.

FEATURES

- Fire resistance class EL-90 according to EN 1366/3
- Tested to AS1530.4-2005 AS4072.1-2005
- 20:1 volume expansion
- Suitable for electrical flush boxes such as light switches & socket outlets
- Tested with single & double layer GIB walls



BEFORE



AFTER



CAT NO. TNFIREPAD





rayTEC[®]



SPX-WL168
Zone 1/21

SPX-WL84
Zone 1/21

SPARTAN LINEAR

ZONE 1 HAZARDOUS AREA LUMINAIRE

The SPARTAN Linear range is designed specifically for use in new hazardous area installations or to retrofit existing fluorescent installations which require high performance, reliable, White-Light illumination.

Housed in marine grade aluminium and using Raytec's field-proven, long-life LED technology, SPARTAN Linear is ATEX and IEC Ex approved for all Zone 1/21 applications (Zone 2/22 variants also available). SPARTAN Linear's overall dimensions, fixing centres and gland entries are all compatible with traditional Ex e 2x18W fluorescent luminaires, so end users can upgrade to LED easily.

- High lumen output LEDs - up to 3,050 lumens (WL84)/6,130 lumens (WL168)
- ATEX and IEC Ex approved – Zone 1/21
- ABS approved
- Zone 2 variants and C1D2 variants available
- Retrofittable
- Intelligent Emergency variants - up to 100% light output
- Ultra long life
- Easy installation, maintenance, & inspection
- Wide operating temperature -40° to +55°C



Features	Benefits
Retrofitable	Easy Installation, matching the dimensions of traditional 2x18W fluorescent fittings, to provide an easy direct replacement Equivalent Output to a 2x18W fluorescent using SPX-WL84 & SXP-WL168 replaces 2x36W fluorescent
Intelligent Emergency	Self-testing emergency battery proactively monitors & maintains the overall health of the luminaire Easy inspection thanks to a tri-colour LED indicator
Modular Design	Both the LED & PSU modules are easily accessible for maintenance and inspection
Ultra-Powerful	High lumen output – up to 6,130 lumens for SPX-WL168 & 3,050 lumens for SPX-WL84
Ultra-Reliable	Industry leading 5 year warranty Designed & manufactured in the UK to the highest standards including both ISO9001 & ISO14001 Intelligent emergency with automatic self-testing
Ultra-Efficient	CoolExtrude™ thermal management delivers class leading energy efficiency Significant running and maintenance savings compared to traditional lighting technologies SMART access wiring system for safe and efficient installation, set-up and ongoing inspection



TRANSDelta4 PORTABLE APPLIANCE TESTER KITS

SAMSUNG 8" TABLET*

***TRANSDelta4-ZTAB &
TRANSDelta4-ZBATT kits only**



MI3309BT PORTABLE APPLIANCE TESTER

MEASURING FUNCTIONS

- Functional and visual inspection
- Earth bond resistance
- Insulation resistance
- Insulation resistance of isolated accessible conductive parts
- Substitute leakage current
- Substitute leakage current of isolated accessible conductive parts
- Differential leakage current test
- Touch leakage test
- RCD and portable RCD testing, type (K, S)
- Power test
- IEC cord polarity test
- Leakage and load currents with optional current clamp
- TRMS voltage meter



ZEBRA TLP 2824 PLUS PRINTER

KEY FEATURES

- 250 Tags on each roll
- RS232 or Bluetooth connection to MI3309BT
- Linear Barcode or QR code
- Custom logo on tags
- High efficiency and reliability
- Tough synthetic labels
- Cheapest tag printer available
- Operating voltage 100–240V AC or optional rechargeable battery pack



ITEMS IN THE KIT

	TRANSDelta4-Z	TRANSDelta4-ZTAB	TRANSDelta4-ZBATT
MI3309BT STANDARD KIT			
-Instrument MI3309BT Delta GT	✓	✓	✓
-Soft Carrying Bag	✓	✓	✓
-IEC Cable, 2m, 2pcs	✓	✓	✓
-Tests Lead, Black/Green/Brown	✓	✓	✓
-Crocodile Clips, Black/Green/Brown	✓	✓	✓
-Test Probes, Black/Green/Brown	✓	✓	✓
-PC Software PATLink PRO	✓	✓	✓
-RS232 Cable	✓	✓	✓
-USB Cable	✓	✓	✓
-Instruction Manual (CD)	✓	✓	✓
-Short Instruction Manual	✓	✓	✓
-Calibration Certificate	✓	✓	✓
-NiMH Rechargeable Batteries, 6 x size AA	✓	✓	✓
ZEBRA 2824+ W.POWER SUPPLY	✓	✓	✓
SOFT CARRY BAG FOR PRINTER	✓	✓	
BLACK RIBBON	✓	✓	✓
ROLL OF 250 LABELS	✓	✓	✓
FREE LOGO UPLOAD	✓	✓	✓
S2063 BLUETOOTH ZEBRA DONGLE		✓	✓
ANDROID PATLink APPLICATION KEY		✓	✓
SAMSUNG 8" TABLET		✓	✓
ZEBRA BATTERY PACK WITH CHARGER			✓
HARD CASE WITH CUSTOM FOAM INSERT			✓



MAKE THE RIGHT CONNECTION

NZ Style Split Bolt Connectors



Auckland

78 Cryers Road
East Tamaki
Auckland
NEW ZEALAND
Ph 0800 442 182
PO Box 39 383
Howick, Auckland

Wellington

10 Petone Ave
Petone
Wellington
NEW ZEALAND
Ph 04 576 2530
PO Box 39 383
Howick, Auckland
NEW ZEALAND
sales@transnet.co.nz

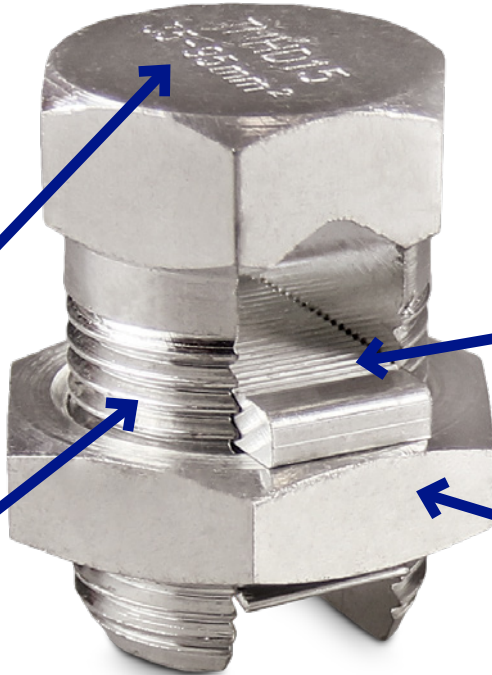
TransNet Tonga

Nuku'alofa

Lakalakaimonu Multi Utility
Complex
Taufa'ahau Road
Poutaha
Nuku'alofa
TONGA
Ph +67 627 939
PO Box 2932
Nuku'alofa
TONGA
transnet@kalianet.to



Cat No. and size range engraved in connector body



Tinned brass construction



Grooved plate to help grip wire and give better connection

Hex Nut for easy installation

Used in New Zealand since the late 1940s, This style of split bolt has proven to be a simple to use connector for use on copper overhead lines. Our NZ style connectors are made in Australia from Australian Brass and have an electro tinned finish.

BENEFITS

- Simple to install - no special tools
- Affordable
- Range taking design - connectors fit multiple cable combinations
- Range accommodates 4mm² to 120mm² (in just 8 connectors)
- Can be removed easily
- Long-lasting
- Grooved plate to help grip wire & give better connection
- Hex nut for easy installation

NOTE: Do not use a rattle gun to tighten.

Cat No.	Conductor Size Range				Torque Setting (Nm) Max.
	Min.* (mm ²)	Max.* (mm ²)	Min. (mm O.D.)	Max. (mm O.D.)	
TNHD9	4	7	2.7	4.1	5-10
TNHD10	6	16	3.8	5.8	10-15
TNHD12	10	25	4.3	6.6	15-20
TNHD12A	16	35	5.3	8.12	20-25
TNHD13	25	50	6.6	10.16	40-45
TNHD14	25	70	7.3	11.17	50-55
TNHD15	35	95	8.8	13.46	105-110
TNHD18	50	120	10.5	16.10	105-110

*Min/Max of each of the two conductors being joined.



TransNet NZ Ltd has made every reasonable effort to ensure the accuracy of this information and it is to the best of our knowledge correct and reliable. Under no circumstances does this constitute an assurance of any particular quality or performance and users should independently evaluate the suitability of products for their desired application. All information in this publication including pricing, drawings, illustrations, images and graphic designs are reflections of our current understanding. TransNet NZ Ltd reserves the right to make any adjustment to this information at any time. Our liability for the products outlined in this publication is set forth in our standard terms and conditions of trade. In case of any potential ambiguities or questions, please contact us for clarification.



NEW ZEALAND OWNED